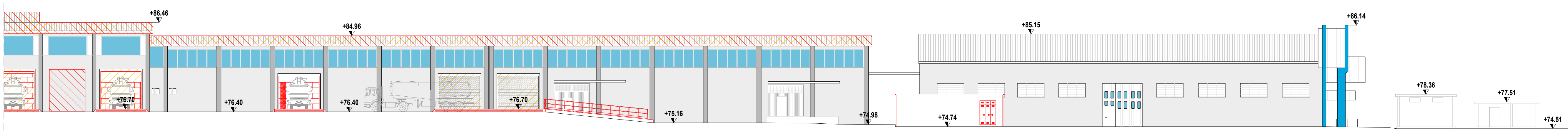


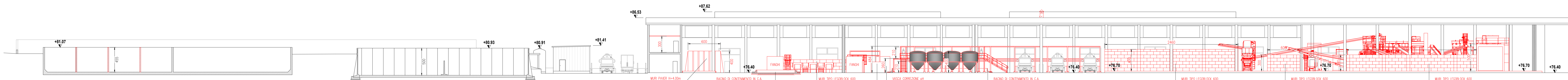
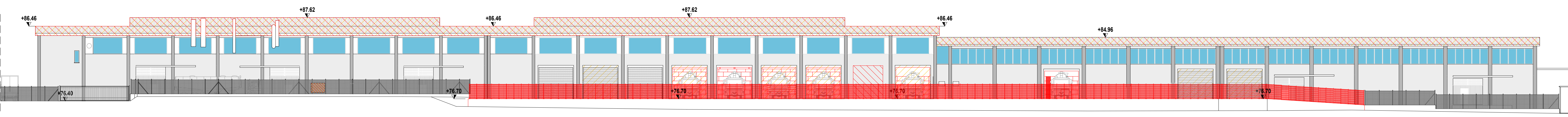
PROSPETTO EST  
Scala 1:250



PROSPETTO OVEST  
Scala 1:250



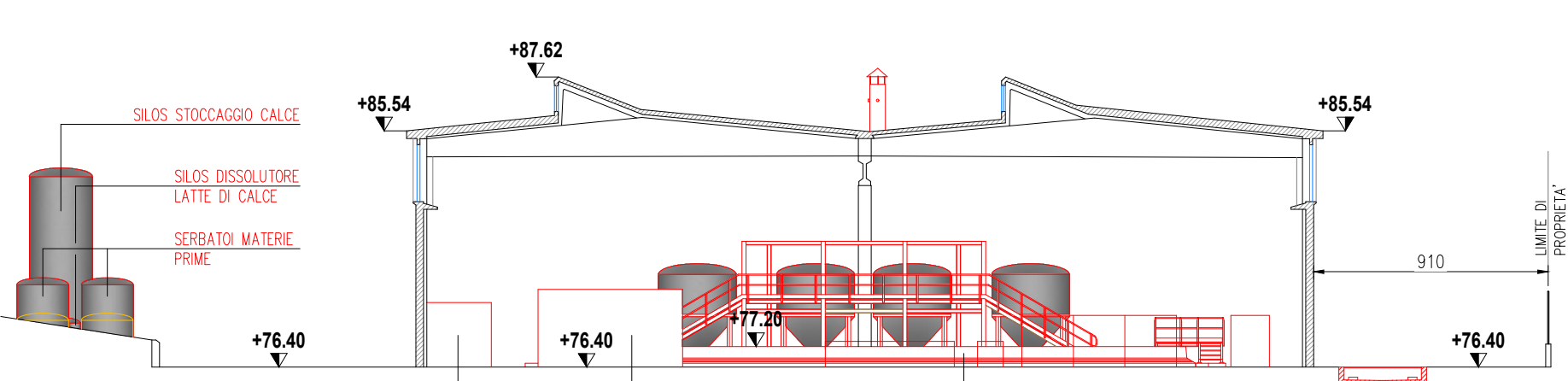
PROSPETTO EST (VISTA ESTERNA)  
Scala 1:250



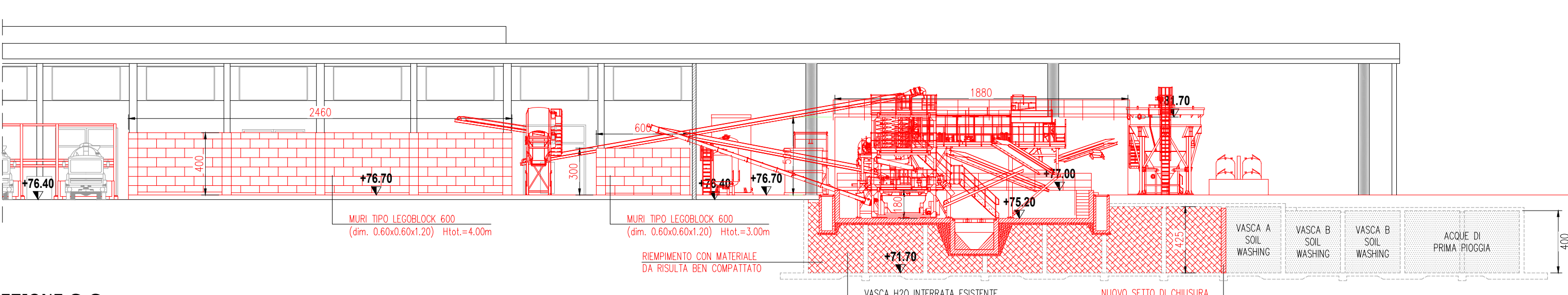
SEZIONE C-C  
Scala 1:250



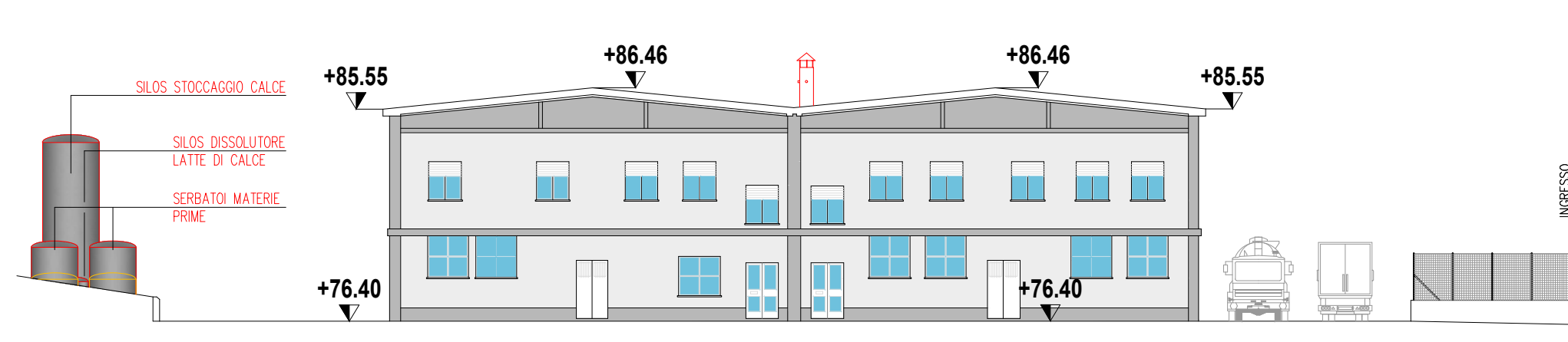
PROSPETTO NORD  
Scala 1:250



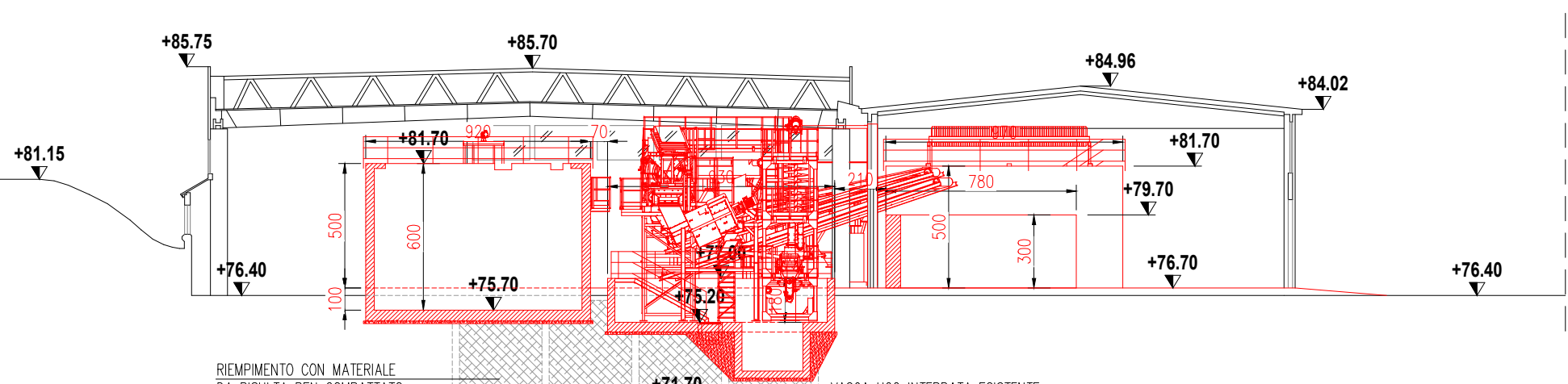
SEZIONE B-B  
Scala 1:250



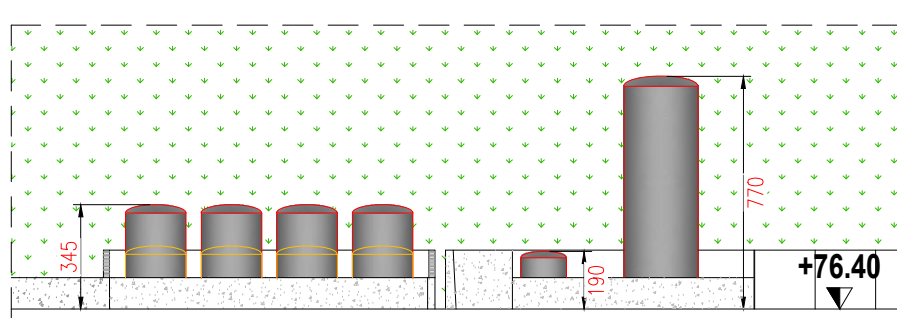
SEZIONE G-G  
Scala 1:250



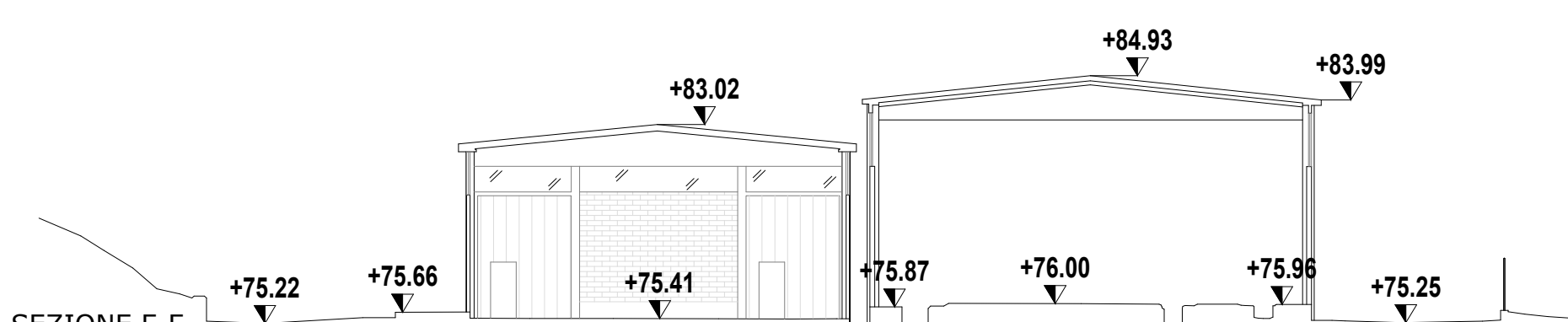
PROSPETTO SUD  
Scala 1:250



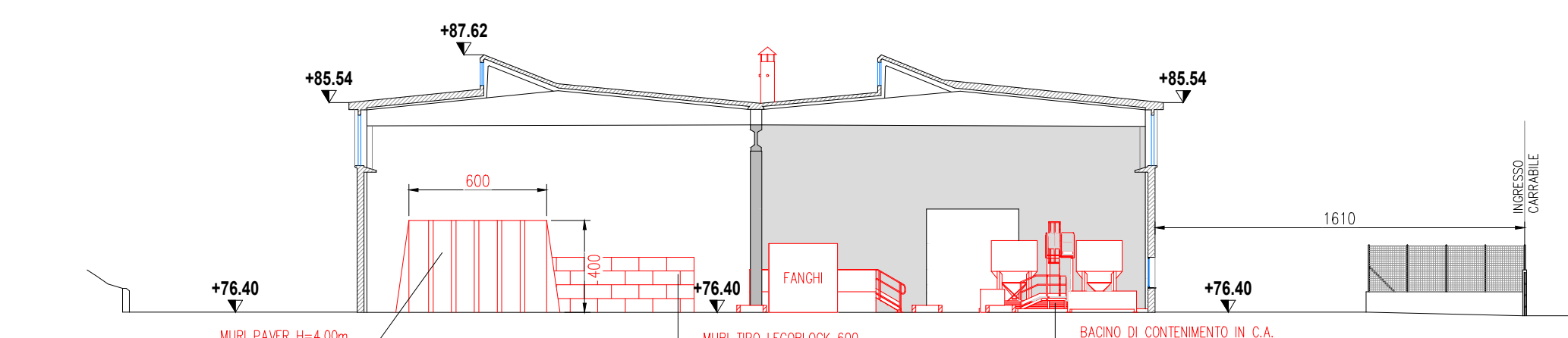
SEZIONE E-E  
Scala 1:250



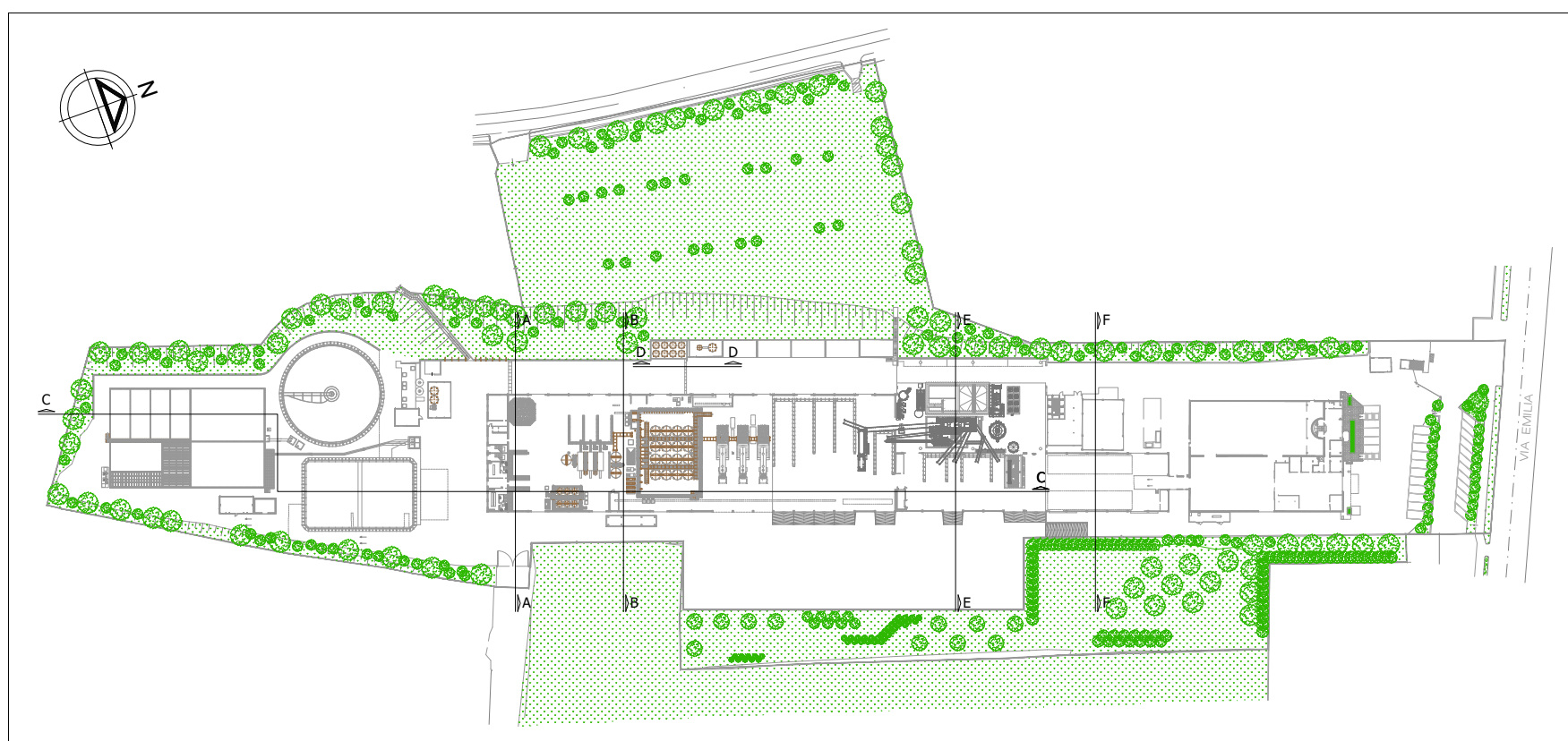
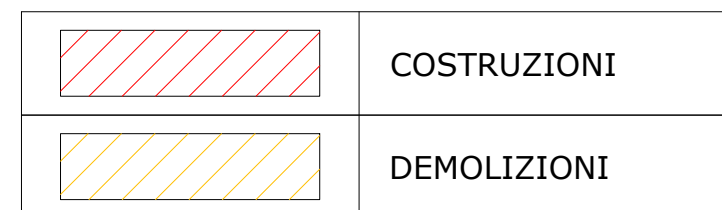
SEZIONE D-D  
Scala 1:250



SEZIONE F-F  
Scala 1:250



SEZIONE A-A  
Scala 1:250



KEY PLAN  
Scala 1:2000



Impianto per il trattamento e  
recupero dei rifiuti non pericolosi

STUDIO DUE ESSE

STUDIO DUE ESSE s.r.l.  
Via Mazzini, 2  
40138 Bologna  
P.IVA: 01056610395

PROGETTO DEFINITIVO

Sito industriale di Toscanella di Dozza

ELABORATO PD B.13

Prospetti e sezioni fabbricati - Stato comparato

Rev.	Data	Scala	Descrizione revisione	Redatto	Controllato	Approvato
00	30/01/2023	1:250	EMISSIONE PER PAUR	Curella	Francesconi	Salvotti